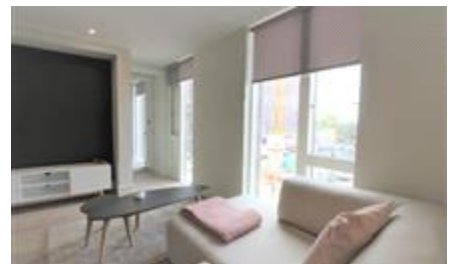




NPP RESIDENTIAL

SALES + LETTINGS




Bentinck Street
£900 pcm

FIRST MONTHS RENT HALF
FOR DECEMBER MOVE IN!

STUNNING one bedroom apartment is FULLY FURNISHED to a HIGH STANDARD, benefiting from a shared ROOF TERRACE with views over the city centre and St George's church.

- Fob entry
- Fully Furnished

Energy Efficiency Rating

	Current	Potential
<i>Very energy efficient - lower running costs</i> (92-100) A		
(81-91) B	88	88
(69-80) C		
(55-68) D		
(39-54) E		
(21-38) F		
(1-20) G		
<i>Not energy efficient - higher running costs</i>		
England & Wales	EU Directive 2002/91/EC	

The energy efficiency rating is a measure of the overall efficiency of a home. The higher the rating the more energy efficient the home is and the lower the fuel bills will be.

Viewing
Reference

Strictly by appointment with NPP Residential - Head Office Telephone
0161 639 0050
NPPR0027

Whilst every effort is made to ensure the accuracy of these details, it should be noted that the measurements are approximate only. Floorplans are for representation purposes only and prepared according to the RICS Code of Measuring Practice by our floorplan provider. Therefore, the layout of doors, windows and rooms are approximate and should be regarded as such by any prospective tenant.