



Wilburn Basin, Orsdall Lane

£270,000 Leasehold

Stunning 2 bedroom in Wilburn Basin Development

Description

A LOVELY TWO BEDROOM APARTMENT SITUATED IN THE SOUGHT AFTER WILBURN BASIN DEVELOPMENT. This development comes with 24hr concierge, onsite gym and cinema room.

This property is located on the third floor and benefits from two double bedrooms, an open plan living and kitchen area a bathroom and an en-suite off the main bedroom. There is also a storage room off the entrance hall. There are different blocks in the development with many secure entrances to the grounds, from the main entrance is were you will find the 24hr concierge.

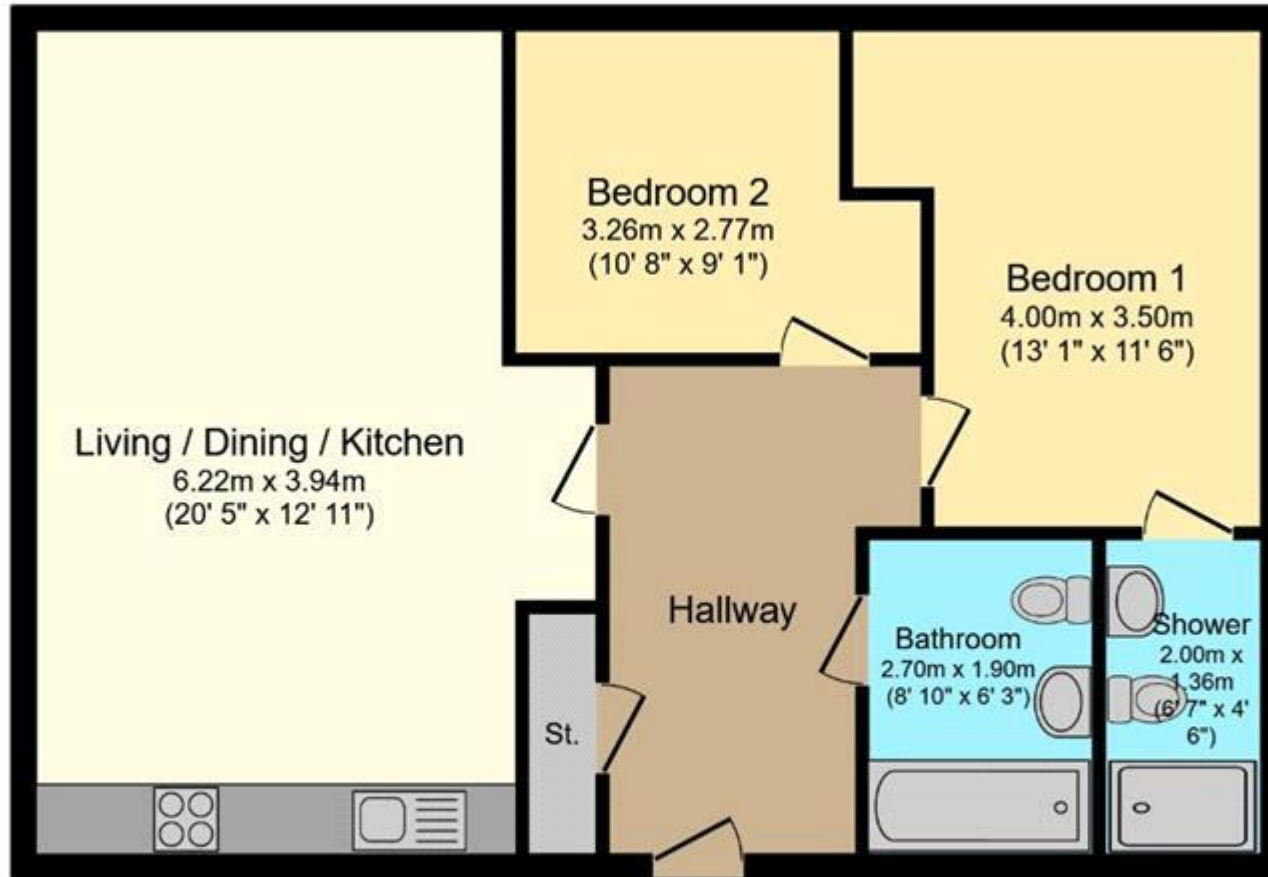
This property is on the edge of Manchester City centre right by Regent Park where you find such stores as Sainsburys. Boots and TK Max. There is also a JD Sports gym. You will only be a short walking distance to the city centre where have many restaurant nightlife entertainment.

This is a must see property and is perfect for the city life.

Tenure

Leasehold





Total floor area 74.1 sq.m. (798 sq.ft.) approx

This Floor Plan is for illustration purposes only and may not be representative of the property. The position and size of doors, windows and other features are approximate. Unauthorized reproduction prohibited. © PropertyBOX



Energy Efficiency Rating		
	Current	Potential
Very energy efficient - lower running costs		
(92-100) A		
(81-91) B		
(69-80) C	82	82
(55-68) D		
(39-54) E		
(21-38) F		
(1-20) G		

Viewing by appointment only
 NPP Residential - Head Office
 14 St Mary's Parsonage, Manchester M3 2DF
 Tel: 0161 639 0050 Email: info@nppresidential.co.uk Website: