



# St George's Gardens, Manchester City Centre

£362,000

2 bedroom apartment for sale

## Description

St George's Gardens is a brand new residential complex brought to you by award winning developer DeTrafford.

This is an exceptional opportunity to purchase a desirable new apartment in a landmark setting at the heart of Manchester - and within the city's most exclusive new Castlefield neighbourhood.

With unrivalled views over the Grade II listed church from which it derives its name, this stunning development of 46 one bed apartments, 91 two bed apartments and 1 three bed apartment has been carefully designed to blend harmoniously with its historic neighbour.

## THE APARTMENTS

Inside, the apartments are meticulously designed for today's city living. Bright, open spaces and clean, contemporary lines are designed to meet the expectations of discerning home buyers and investors while fixtures and finishes reflect the prestige of the building. Each apartment features its own private winter garden and a communal rooftop bar and garden provides attractive outdoor space in a city setting and the opportunity to relax and unwind.

## THE ROOFTOP BAR AND GARDENS



The 11th floor provides access to an attractive haven in the sky – a large roof garden affording the space to breathe. There’s also the comfort of being part of the new, thriving residential community of Manchester Gardens. This amazing space benefits from all day sunlight and offers 360 panoramic views of the beautiful Manchester skyline.

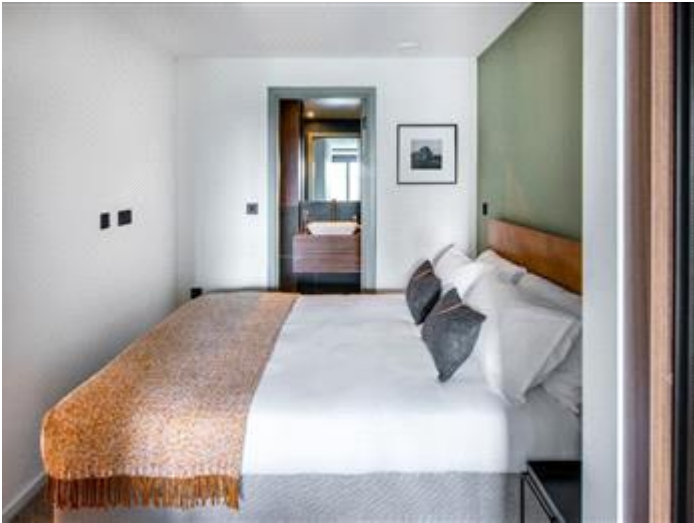
The focal point of the rooftop space is undoubtedly the large artificially turfed square and Mediterranean style bar area which will play host to a wide range of events and activities arranged by DeTrafford and the residents. Whether you want to sip on a cocktail, read a book, do pilates or such relax with friends the rooftop space is the perfect space for urban bliss.

The Location:  
Castlefield is

## **Tenure**







Viewing by appointment only  
NPP Residential - Head Office  
14 St Mary's Parsonage, Manchester M3 2DF  
Tel: 0161 639 0050 Email: [info@nppresidential.co.uk](mailto:info@nppresidential.co.uk) Website: