



Apartment , Elisabeth Mill, Elisabeth Gardens, Stockport

£200,000 Leasehold

Two bed in converted mill

Description

A LOVELY TWO BEDROOM PROPERTY IN A CONVERTED MILL IN THE REDDISH AREA. This property benefits from a full open plan living, dinning and kitchen area, two double bedrooms and a full fitted family bathroom.

This ground floor property is located in the converted Elisabeth Mill with an array of high specification features such as integrated kitchen appliances, a video entry intercom system plus much more. There arrange of local amenities nearby such as 2 minutes from the Houldworth Golf Club, 5 minutes from local shopping centre and 10 minutes from Reddish South Station along with several options of public transport links which provide easy access into Manchester City Centre.

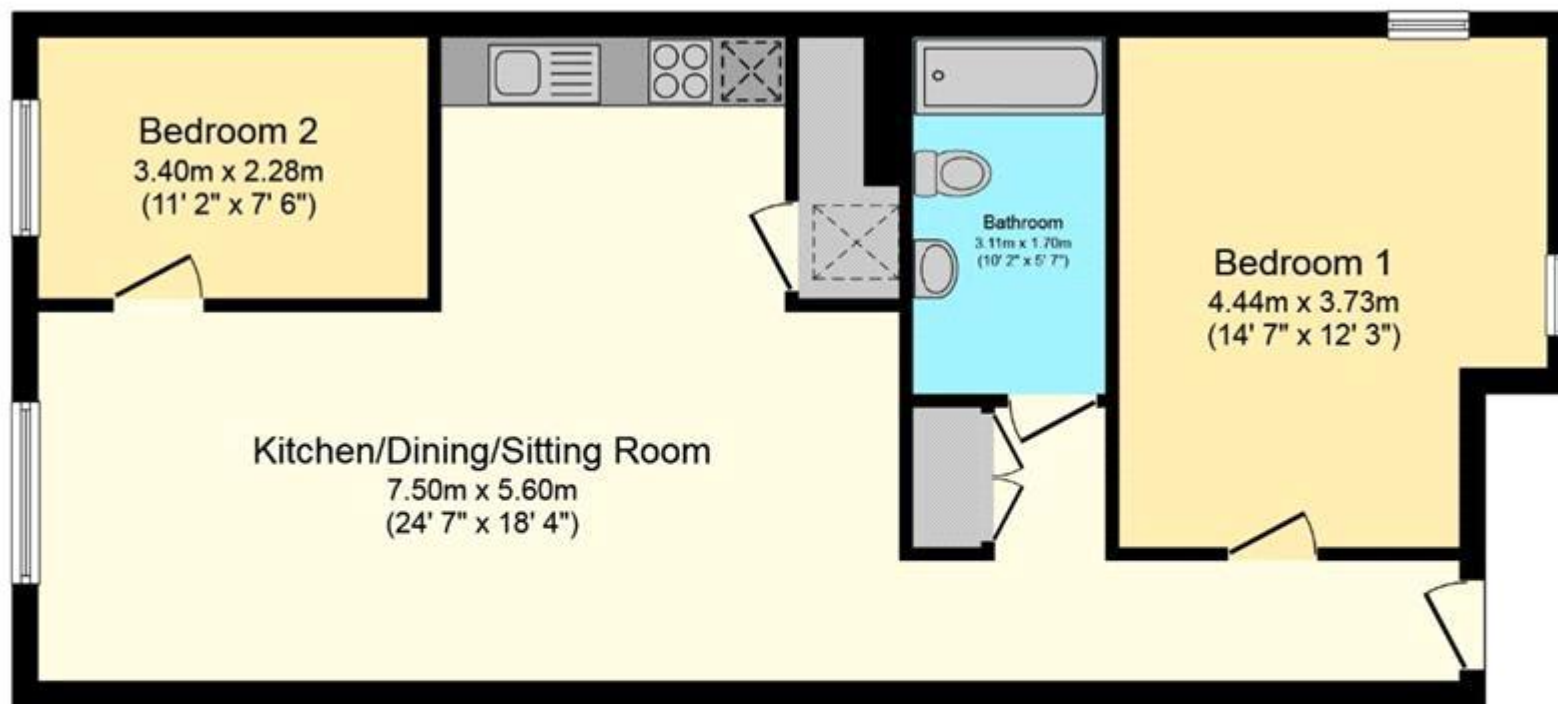
Tenure: Leasehold

Service Charge: £2,350 per year

Tenure

Leasehold



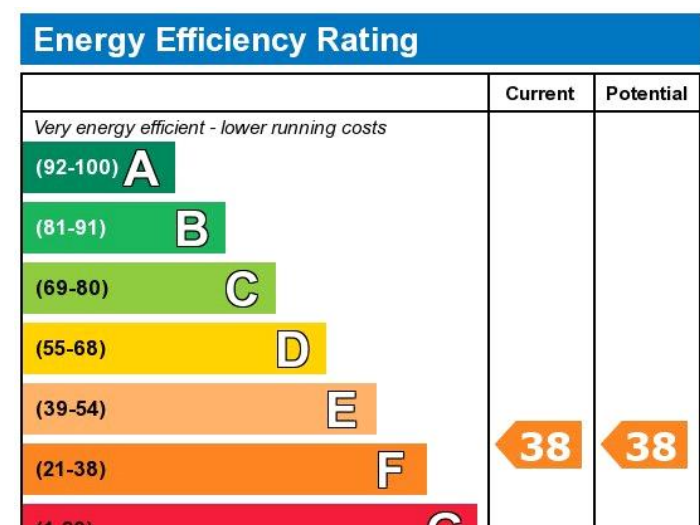
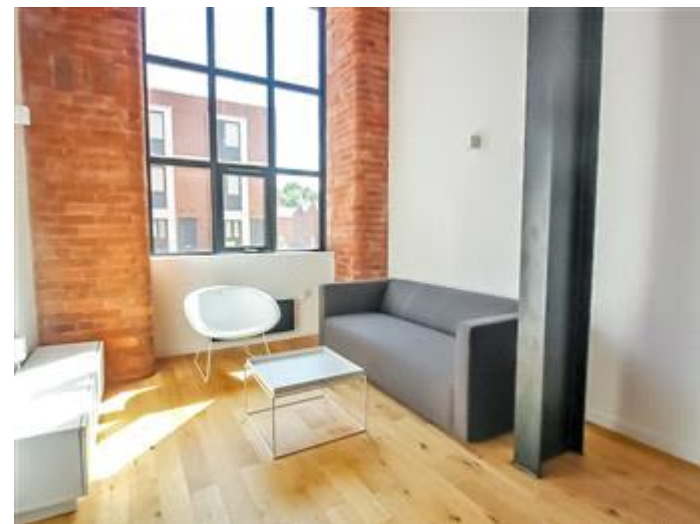
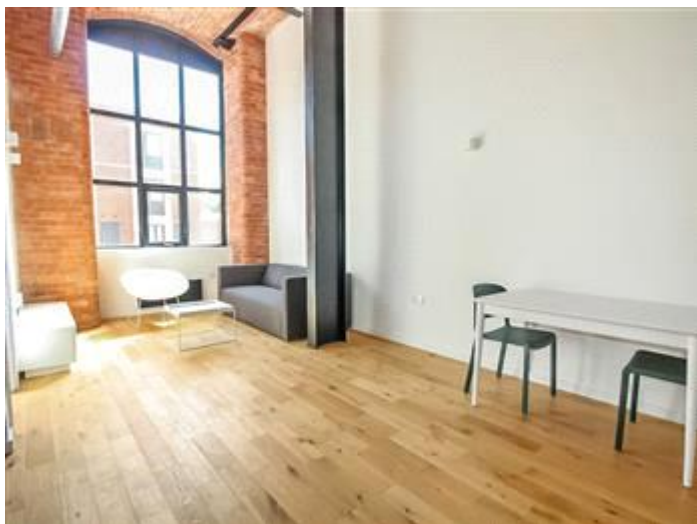


Floor Plan

Floor area 71.4 sq.m. (769 sq.ft.) approx

Total floor area 71.4 sq.m. (769 sq.ft.) approx

This Floor Plan is for illustration purposes only and may not be representative of the property. The position and size of doors, windows and other features are approximate. Unauthorized reproduction prohibited. © PropertyBOX



Viewing by appointment only
 NPP Residential - Head Office
 14 St Mary's Parsonage, Manchester M3 2DF
 Tel: 0161 639 0050 Email: info@nppresidential.co.uk Website: <https://nppresidential.co.uk/>