



Sky Gardens, Spinners Way, Manchester

£260,000 Leasehold

Two bed apartment

Description

A UNIQUE TWO BED, 2 BATHROOM APARTMENT WITH A SPACIOUS PATIO IN THE DEVELOPMENT OF SKY GARDENS, LOCATED IN THE POPULAR CASTLEFIELD AREA.

This property benefits from an open plan living/kitchen area with an island and breakfast bar. There are also two double bedrooms, one with an en-suite bathroom and the other with a jack and jill bathroom which also opens in to the main living area.

Sky Gardens blends convenient access to the business district with outdoor space and community living. A short walk from Deansgate Station and walking distance to the central business district, this location is an unmissable opportunity for city workers looking to settle down.

Council Tax Band: D

Tenure: Leasehold (144 years)

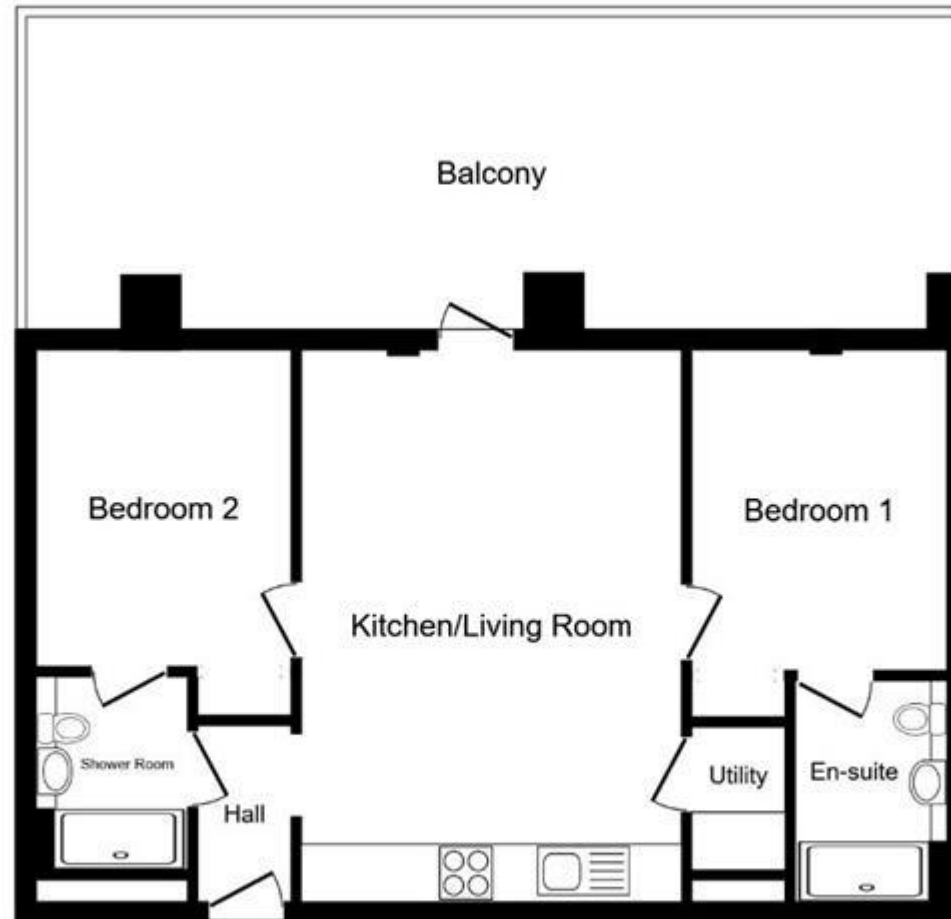
Ground Rent: £400 per year

Service Charge: £1,568.13 per year

Tenure

Leasehold





Floor Plan

This plan is for illustration purposes only and may not be representative of the property. Plan not to scale. Powered by PropertyBox



Energy Efficiency Rating		
	Current	Potential
Very energy efficient - lower running costs		
(92-100) A		
(81-91) B		
(69-80) C	79	79
(55-68) D		
(39-54) E		
(21-38) F		
(1-20) G		

Viewing by appointment only
 NPP Residential - Head Office
 14 St Mary's Parsonage, Manchester M3 2DF
 Tel: 0161 639 0050 Email: info@nppresidential.co.uk Website: <https://nppresidential.co.uk/>