



Elan Place, Buckshaw Village, Chorley

Offers Over £220,000 Leasehold

4 bedroom semi-detached house for sale

Description

Nestled in the heart of Buckshaw Village, this exquisite 4-bedroom, semi detached townhouse presents a perfect blend of modern elegance and spacious living. Offering convenient access to motorway links and other transport links, this is the ideal first time buy or family home.

On entrance, the ground floor welcomes you with a bright hallway leading to the large open plan kitchen and dining/ living area to the rear of the property with French doors onto the enclosed rear garden. The kitchen comprises of a range of modern fitted wall and base units, complimented with integrated fridge/ freezer, oven and hob. Moving back to the hallway you will also find a W.C and study which can also be used as a fourth bedroom.

To the first floor, you will be impressed by the thoughtfully designed living room and Master bedroom with En suite shower room.

To the second floor, you will find a further two double bedrooms, both neutrally decorated and a three piece family bathroom comprising; bath, hand basin and W.C.

Externally the property benefits from gardens to the front and rear, outdoor power supply and two allocated car parking spaces.



To book your viewing of this beautiful home, call our office today.

* Please note, the vendor of this property is associated with NPP Residential

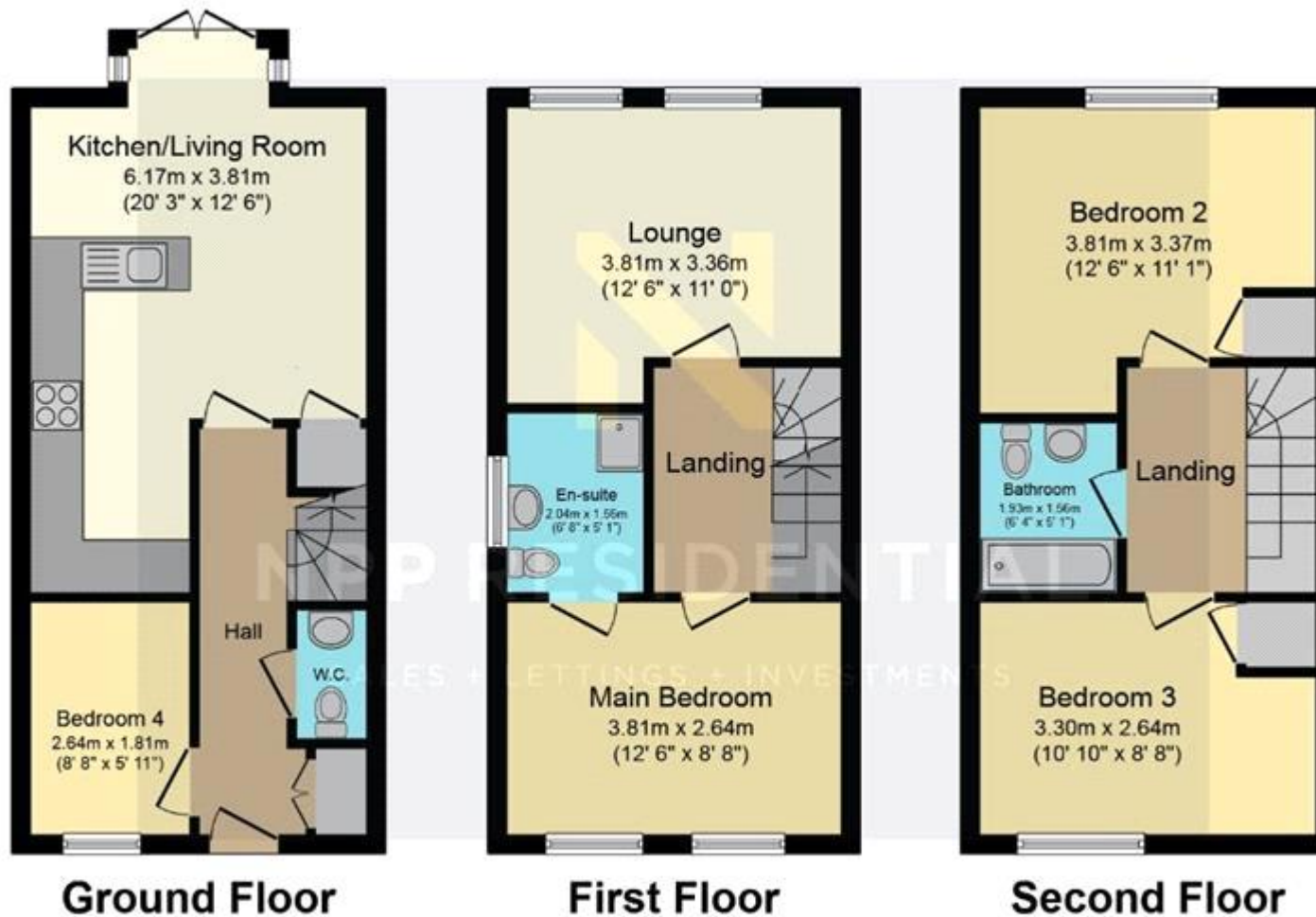
Tenure: Leasehold

Ground Rent: £250 per year

Service Charge:

Tenure

Leasehold



Total floor area 95.2 sq.m. (1,025 sq.ft.) approx

This plan is for illustration purposes only and may not be representative of the property. Plan not to scale. Powered by PropertyBox



Energy Efficiency Rating		
	Current	Potential
Very energy efficient - lower running costs		
(92-100) A		
(81-91) B	81	82
(69-80) C		
(55-68) D		
(39-54) E		
(21-38) F		
(1-20) G		

Viewing by appointment only
 NPP Residential - Head Office
 14 St Mary's Parsonage, Manchester M3 2DF
 Tel: 0161 639 0050 Email: info@nppresidential.co.uk Website: <https://nppresidential.co.uk/>