



Water Street, Stockport

£129,320

1 bedroom apartment for sale

Description

Meadow Mill is a stunning 19th century mill in Stockport, Greater Manchester that is being refurbished and transformed into 213 luxury apartments. This high spec development will provide first-class accommodation to renters in the Greater Manchester area, with a modern design that showcases the building's industrial past.

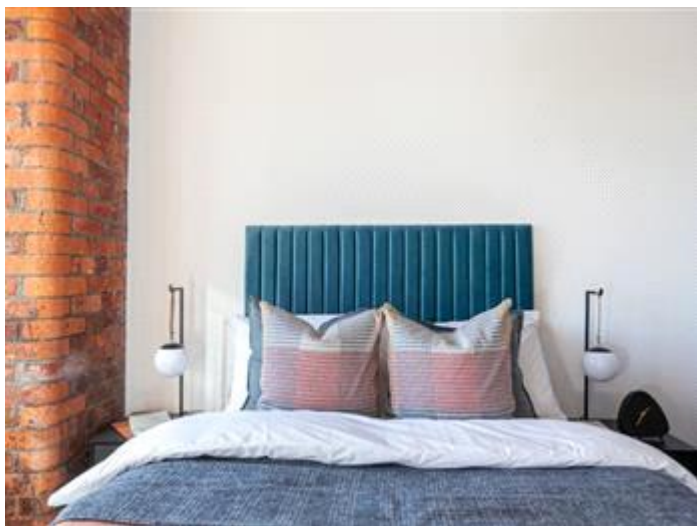
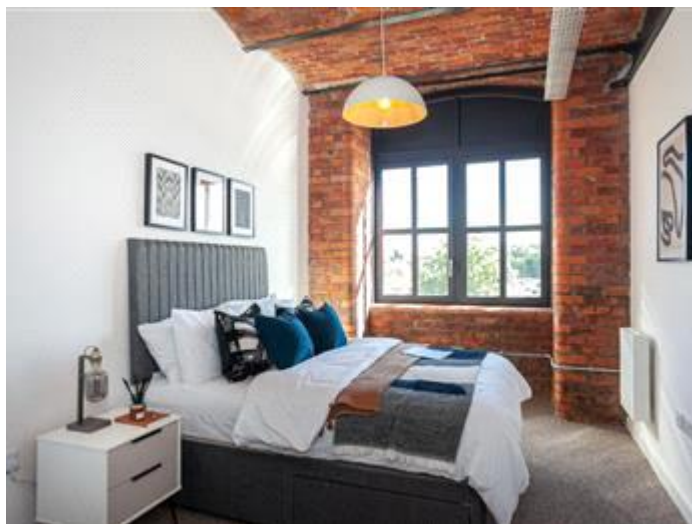
The development will also feature 173 carpark spaces and secure bicycle storage, and is within walking distance of Stockport's town centre.

The mill's original features will take centre stage throughout the development, transporting residents back in time the moment they step through the door. The original brick will be featured throughout, along with the steel beams and large windows.

Not only do the original features of the building add charm and character, the 1 metre deep floor and 500mm thick walls will also eliminate any outside noise, making Meadow Mill the perfect retreat for residents.

Tenure





Viewing by appointment only
NPP Residential - Head Office
14 St Mary's Parsonage, Manchester M3 2DF
Tel: 0161 639 0050 Email: info@nppresidential.co.uk Website: <https://nppresidential.co.uk/>