



Sky Gardens, Castlefield

£220,000 Leasehold

Two bed apartment in a prime location

Description

Take a look at this fantastic development located in Castlefield, Manchester. This stylish 2 bed, 2 en-suite bathroom duplex apartment offers luxury open living, with a fully integrated kitchen, double-height windows and a mezzanine floor overlooking the living area.

Sky Gardens blends convenient access to the business district with outdoor space and community living. A short walk from Deansgate Station and walking distance to the central business district, this location is an unmissable opportunity for city workers looking to settle down.

As the property is situated in the Castlefield area there are many local amenities such as Regent Retail Park which has such stores as Sainsburys, Boots and Costa and also JD Gyms. If you do not wish to walk the short distance to the centre of Manchester were you can find all sort of entertainment such as restaurants and bars you can walk for a few minutes to Cornbrook tram stop. The building also has a recently opened Tesco Extra store for your everyday needs.

Council Tax Band: D

Tenure: Leasehold (143 years)

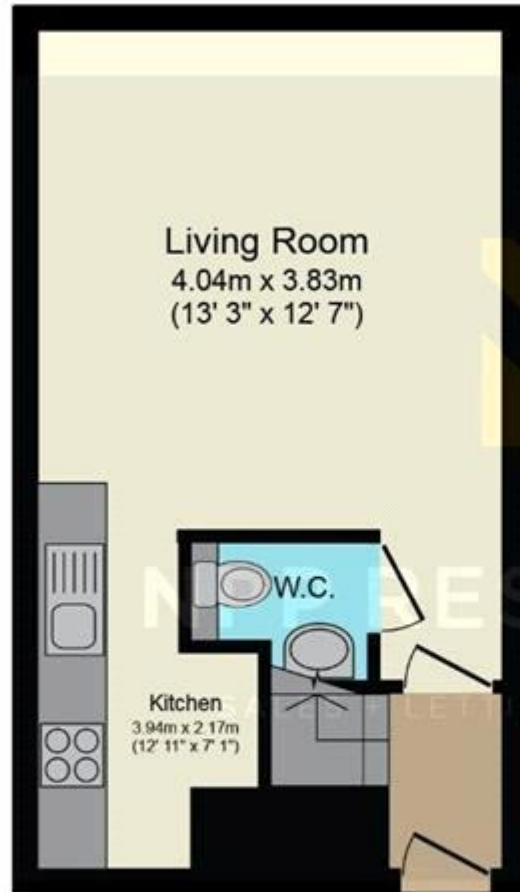
Ground Rent: £500 per year

Service Charge: £2,500 per year

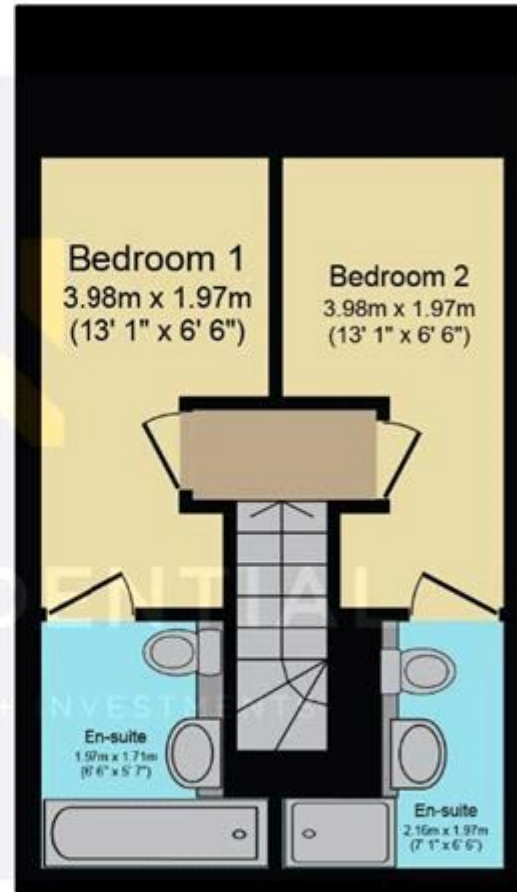


Tenure

Leasehold



Ground Floor



First Floor

Total floor area 58.8 sq.m. (633 sq.ft.) approx

This plan is for illustration purposes only and may not be representative of the property. Plan not to scale. Powered by PropertyBox



Energy Efficiency Rating		
	Current	Potential
Very energy efficient - lower running costs		
(92-100) A		
(81-91) B	85	85
(69-80) C		
(55-68) D		
(39-54) E		
(21-38) F		
(1-20) G		

Viewing by appointment only
 NPP Residential - Head Office
 14 St Mary's Parsonage, Manchester M3 2DF
 Tel: 0161 639 0050 Email: info@nppresidential.co.uk Website: <https://nppresidential.co.uk/>