



Sky Gardens, Spinners Way, Castlefield, Manchester

£200,000 Leasehold

Two bed city centre apartment

Description

GREAT INVESTMENT OPPORTUNITY AT 7.20% YIELD

TWO-BED DUPLEX APARTMENT WITH A SUSPENDED GALLERY BEDROOM AND DOUBLE-HEIGHT WINDOWS WHICH CREATE AN OPEN CONTEMPORARY LIVING SPACE. Sky Gardens is located in Castlefield, a historic and sought-after neighbourhood in Manchester City Centre.

The property benefits from high-quality, individually designed kitchens that come complete with Neff appliances fitted as standard including; an induction hob, single oven, dishwasher and fridge/freezer with solid quartz surfaces. Tiling is standard to the kitchen floors. The bathrooms feature Villeroy & Boch sanitaryware, Kaldewei bath and Hansgrohe brassware with porcelain tiling.

This unit is the first resale unit available after the development was sold off plan and there is currently a high demand of tenants currently waiting to get into this area. Here at NPP Residential, our lettings department has also managed the two neighbouring developments with massive success with 100% tenant capacity.

AGENTS NOTES Pictures taken before current tenants moved in.

Tenure: Leasehold (144 years)

Ground Rent: £250 per year



Service Charge: £1,649.89 per year

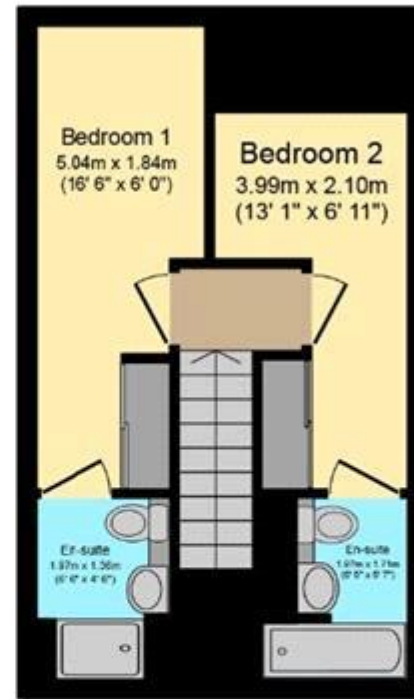
Tenure

Leasehold



Ground Floor

Floor area 28.7 sq.m. (309 sq.ft.) approx

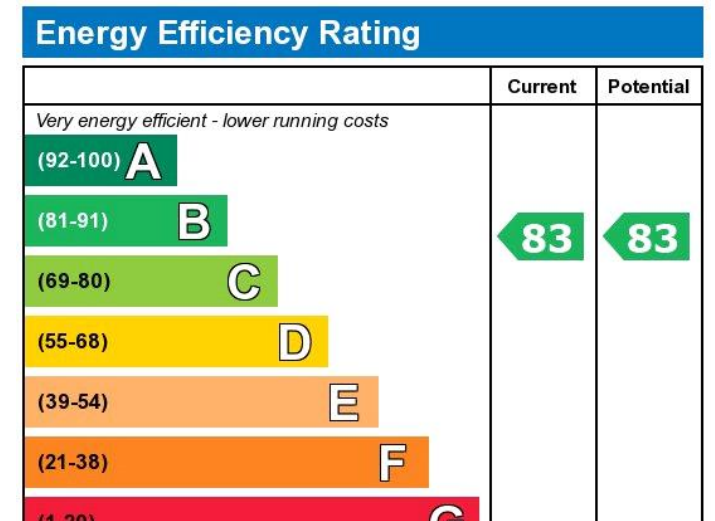


First Floor

Floor area 28.7 sq.m. (309 sq.ft.) approx

Total floor area 57.4 sq.m. (618 sq.ft.) approx

This Floor Plan is for illustration purposes only and may not be representative of the property. The position and size of doors, windows and other features are approximate. Unauthorized reproduction prohibited. © PropertyBOX



Viewing by appointment only
 NPP Residential - Head Office
 22 Lloyd Street, Manchester M2 5WA
 Tel: 0161 639 0050 Email: info@nppresidential.co.uk Website: <https://nppresidential.co.uk/>