



22/09/2023 16:26:42

# Fifty5ive, Queens Street, Salford

£340,000 Leasehold

Luxury 2-bed apartment

## Description

**\*\*NEW TO MARKET\*\*** Welcome to urban sophistication in the heart of Manchester at Fifty5ive, developed by Salboy, where modern elegance meets vibrant city living. This stunning two-bedroom, two-bathroom residence offers the epitome of contemporary comfort and style within the iconic Fifty5ive building.

Step into a generously proportioned living space boasting an open-concept layout, designed to maximize natural light and airflow. With ample room for relaxation and entertainment, this residence provides the perfect canvas for your urban lifestyle.

The kitchen features sleek, high-end appliances, premium finishes, and ample storage, ideal for both casual dining and culinary endeavours. Whether you're hosting dinner parties or preparing intimate meals, this kitchen is sure to inspire your inner chef.

Retreat to the tranquility of two well-appointed bedrooms, each offering a peaceful sanctuary for rest and rejuvenation. The master suite features an ensuite bathroom, providing privacy and convenience, while the second bedroom offers versatility for guests, a home office, or a personal sanctuary.

Indulge in the ultimate spa-like experience in the elegant bathrooms, adorned with designer fixtures, sleek countertops, and luxurious finishes. From invigorating morning routines to relaxing evening



soaks, these bathrooms are designed to elevate your daily rituals.

Step outside to your private balcony and soak in panoramic views of Manchester's dynamic skyline. Whether you're enjoying morning coffee or evening cocktails, this outdoor oasis offers the perfect retreat to unwind and savour the urban scenery.

Residents of Fifty5ive enjoy access to an array of premium amenities, including a fitness centre, and concierge services. From the moment you arrive, you'll experience the convenience and luxury of modern city living at its finest.

Ideally situated in the heart of Manchester, Fifty5ive offers unparalleled access to the city's vibrant cultural scene, world-class dining, shopping destinations, and entertainment options. With easy access to transportation hubs and major thoroughfares, you'll enjoy effortless connectivity to everything the city has to offer.

Don't miss this opportunity to experience urban luxury at its finest in the prestigious Fifty5ive building. Whether you're seeking a stylish residence to call home or a lucrative investment opportunity, this two-bedroom, two-bathroom unit offers the perfect blend of comfort, style, and sophistication in the heart of Manchester.

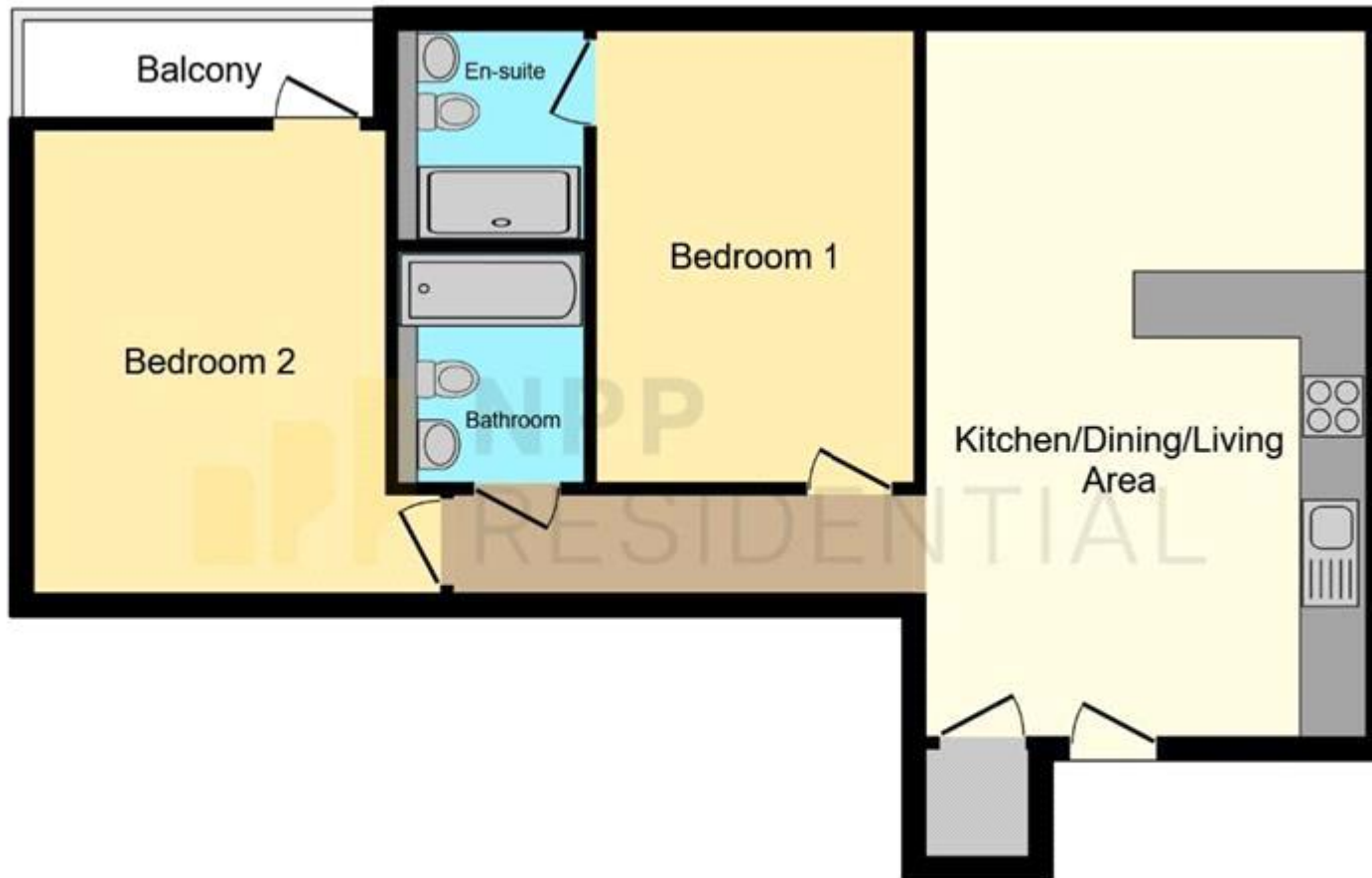
Tenure: Leasehold (250 years)

Ground Rent: £250 per year

Service Charge: £2,660.28 per year

## **Tenure**

Leasehold



Floor Plan

This floor plan is for illustrative purposes only. It is not drawn to scale. Any measurements, floor areas (including any total floor area), openings and orientations are approximate. No details are guaranteed, they cannot be relied upon for any purpose and do not form any part of any agreement. No liability is taken for any error, omission or misstatement. A party must rely upon its own inspection(s). Powered by [www.Propertybox.io](http://www.Propertybox.io)



Energy Efficiency Rating		
	Current	Potential
Very energy efficient - lower running costs		
(92-100) <b>A</b>		
(81-91) <b>B</b>	<b>82</b>	<b>82</b>
(69-80) <b>C</b>		
(55-68) <b>D</b>		
(39-54) <b>E</b>		
(21-38) <b>F</b>		
(1-20) <b>G</b>		

Viewing by appointment only  
 NPP Residential - Head Office  
 22 Lloyd Street, Manchester M2 5WA  
 Tel: 0161 639 0050 Email: [info@nppresidential.co.uk](mailto:info@nppresidential.co.uk) Website: <https://nppresidential.co.uk/>