



Burton Place, Manchester

£180,000 Leasehold

Two bed apartment in a prime location

Description

****CASH BUYERS ONLY**** The spacious open-concept living and dining areas feature large windows/balcony doors, allowing for abundant natural light and a seamless flow throughout. The sleek kitchen is equipped with high-end stainless steel appliances, countertop, and ample cabinetry, perfect for entertaining or daily living.

The two bedrooms offer cosy spaces for relaxation, both featuring large windows with plenty of daylight. The family bathroom is finished with contemporary fixtures, an overhead shower and bathtub, perfect for both daily use and unwinding at the end of the day.

One of the standout features of this property is the secure, designated parking space, providing peace of mind and convenience. Also featuring a large balcony - an ideal spot to enjoy your morning coffee or unwind after a long day.

As the property is situated in the Castlefield area there are many local amenities such as Regent Retail Park which has such stores as Sainsburys, Boots and Costa and also JD Gyms. And only a short walk to the Cornbrook tram stop and the centre of Manchester where you can find all of your entertainment needs such as restaurants, bars and shops.



With strong rental demand in the area, and a RENTAL YIELD OF 8.6%! This home offers not just a great place to live, but a solid investment opportunity for the future.

- Council Tax Band: C
- Tenure: Leasehold (979 years)
- Ground Rent: £500 per year
- Service Charge:
- Parking options: Off Street

Tenure

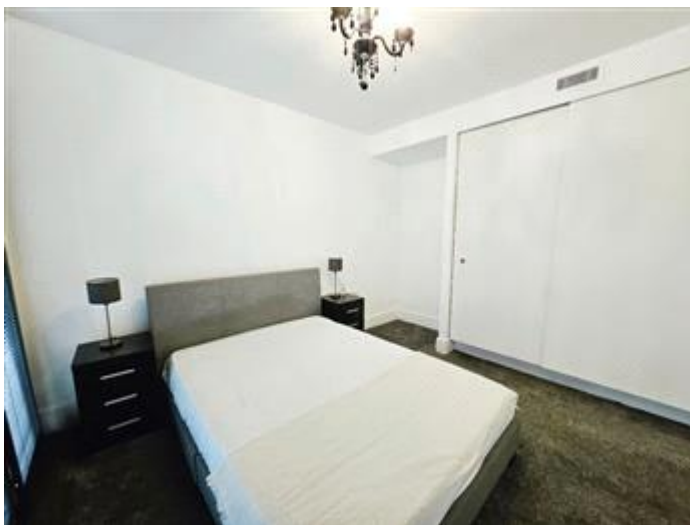
Leasehold



Floor Plan

Total floor area 63.0 m² (678 sq.ft.) approx

This plan is for illustration purposes only and may not be representative of the property. Plan not to scale. Powered by PropertyBox



Energy Efficiency Rating		
	Current	Potential
Very energy efficient - lower running costs		
(92-100) A		
(81-91) B		
(69-80) C	77	77
(55-68) D		
(39-54) E		
(21-38) F		
(1-20) G		

Viewing by appointment only
 NPP Residential - Head Office
 22 Lloyd Street, Manchester M2 5WA
 Tel: 0161 639 0050 Email: info@nppresidential.co.uk Website: <https://nppresidential.co.uk/>