



Victoria House, Ancoats

Offers Over £300,000 Leasehold

1 bedroom apartment for sale

Description

NPP Residential is delighted to present this stunning 12th-floor apartment in the newly built Victoria House development. This exceptional residence offers high-end amenities, including a communal terrace, gym, concierge services, and co-working space, ensuring a lifestyle of comfort and convenience.

The apartment features a bright and spacious open-plan layout, with a stylish kitchen and living area complemented by elegant free-standing furniture and floor-to-ceiling windows that bathe the space in natural light while showcasing breathtaking city views. The modern, fully fitted kitchen, a generously sized double bedroom with built-in wardrobes, and a sleek three-piece bathroom suite complete this exquisite home.

This property is currently tenanted at £1,375 per month, making it an attractive investment opportunity.

Perfectly located in the highly sought-after Ancoats district, the apartment is within walking distance of trendy bars, restaurants, and boutique shops. With New Islington tram stop and Piccadilly Station just minutes away, excellent transport links provide effortless access across Manchester and beyond.

For further details or to arrange a viewing, please get in touch with NPP Residential today.



Council Tax Band: TBC

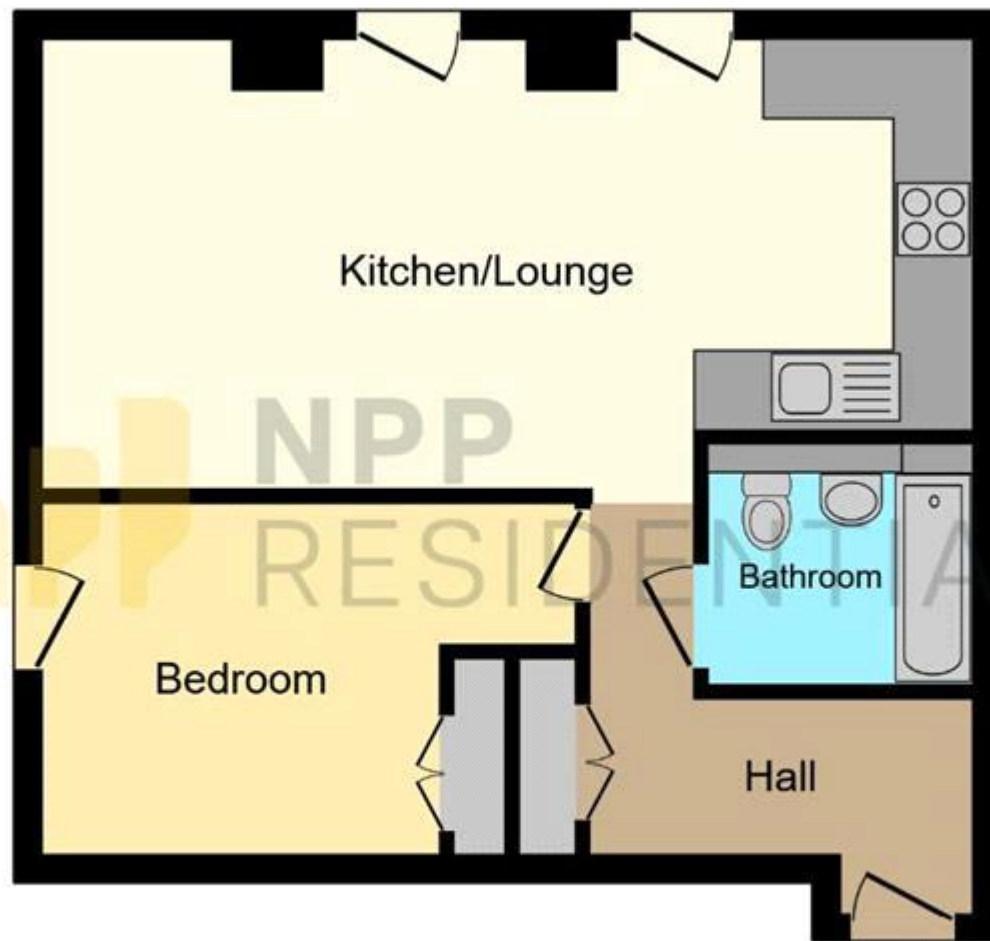
Tenure: Leasehold (250 years)

Ground Rent: £0 per year

Service Charge: £1,995 per year

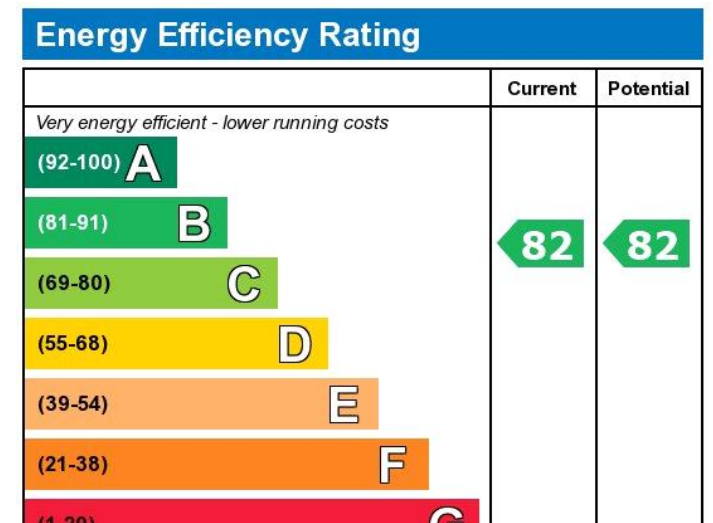
Tenure

Leasehold



Floor Plan

This plan is for illustration purposes only and may not be representative of the property. Plan not to scale. Powered by PropertyBox



Viewing by appointment only
 NPP Residential - Head Office
 22 Lloyd Street, Manchester M2 5WA
 Tel: 0161 639 0050 Email: info@nppresidential.co.uk Website: <https://nppresidential.co.uk/>