



# Elisabeth Mill, Elisabeth Gardens, Stockport

2 bed apartment

OIRO £170,000 Leasehold

## Description

A beautiful 2 -bed apartment on the 2nd floor in the converted Elisabeth Mill in Stockport. This property benefits from a full open-plan living, dining, and kitchen area. One double bedroom and one single as well as a fully fitted family bathroom.

Elisabeth Gardens is a stunning marriage of history and contemporary living in the heart of Reddish's Houldsworth conservation area. Based just over five miles out of the city centre, it offers the perfect suburban environment for those looking for the advantages of city life whilst remaining out of the hustle and bustle of the central district.

This property is located in the converted Elisabeth Mill with an array of high-specification features such as integrated kitchen appliances, a video entry intercom system plus much more. There is a range of local amenities nearby such as 2 minutes from the Houldsworth Golf Club, 5 minutes from the local shopping centre and 10 minutes from Reddish South Station along with several options of public transport links which provide easy access to Manchester City Centre.

Council Tax Band: B

Tenure: Leasehold (244 years)

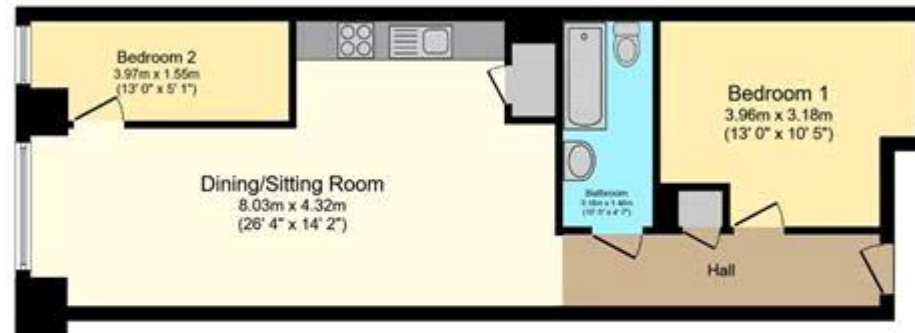
Ground Rent: £347.58 per year

Service Charge: £2,005.12 per year



**Tenure**

Leasehold

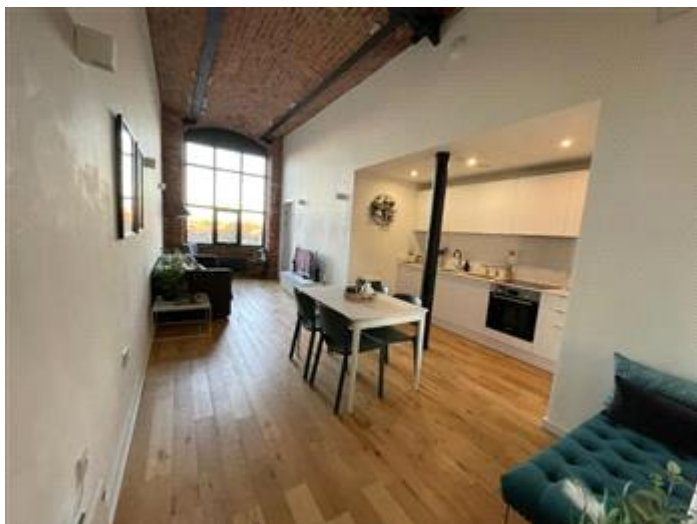


### Floor Plan

Floor area 58.8 sq.m. (633 sq.ft.) approx

Total floor area 58.8 sq.m. (633 sq.ft.) approx

This floor plan is for illustrative purposes only and may not be representative of the property. The position and size of doors, windows and other features are approximate. Unauthorised reproduction prohibited. © PropertyCloud



Energy Efficiency Rating		
	Current	Potential
Very energy efficient - lower running costs		
(92-100) <b>A</b>		
(81-91) <b>B</b>		
(69-80) <b>C</b>		
(55-68) <b>D</b>	<b>56</b>	<b>56</b>
(39-54) <b>E</b>		
(21-38) <b>F</b>		
(1-20) <b>G</b>		

Viewing by appointment only  
 NPP Residential - Head Office  
 22 Lloyd Street, Manchester M2 5WA  
 Tel: 0161 639 0050 Email: [info@nppresidential.co.uk](mailto:info@nppresidential.co.uk) Website: <https://nppresidential.co.uk/>