



Axis Tower, Whitworth Street West, Manchester

Offers Over £280,000 Leasehold

2-bedroom, 2-bathroom apartment

Description

NPP Residential is thrilled to offer this stunning 2-bedroom apartment located in the sought-after Axis development. Featuring canal views and access to top-tier amenities, this property is perfect for those seeking stylish city living.

This apartment consists of a spacious open-plan living room with a Juliet balcony offering views of the canal, a modern and fully equipped kitchen, and two generously sized double bedrooms. The master bedroom features its own private en-suite and there is a main bathroom with a stylish three-piece suite. The building also benefits from a 24-hour concierge service.

Ideally positioned in the heart of Manchester city centre, this apartment is just a two-minute walk from Deansgate, placing a variety of shops, restaurants, and bars at your doorstep.

****AGENTS NOTE - photos taken before tenants moved in****

Council Tax Band: D (Manchester City Council)

Tenure: Leasehold (119 years)

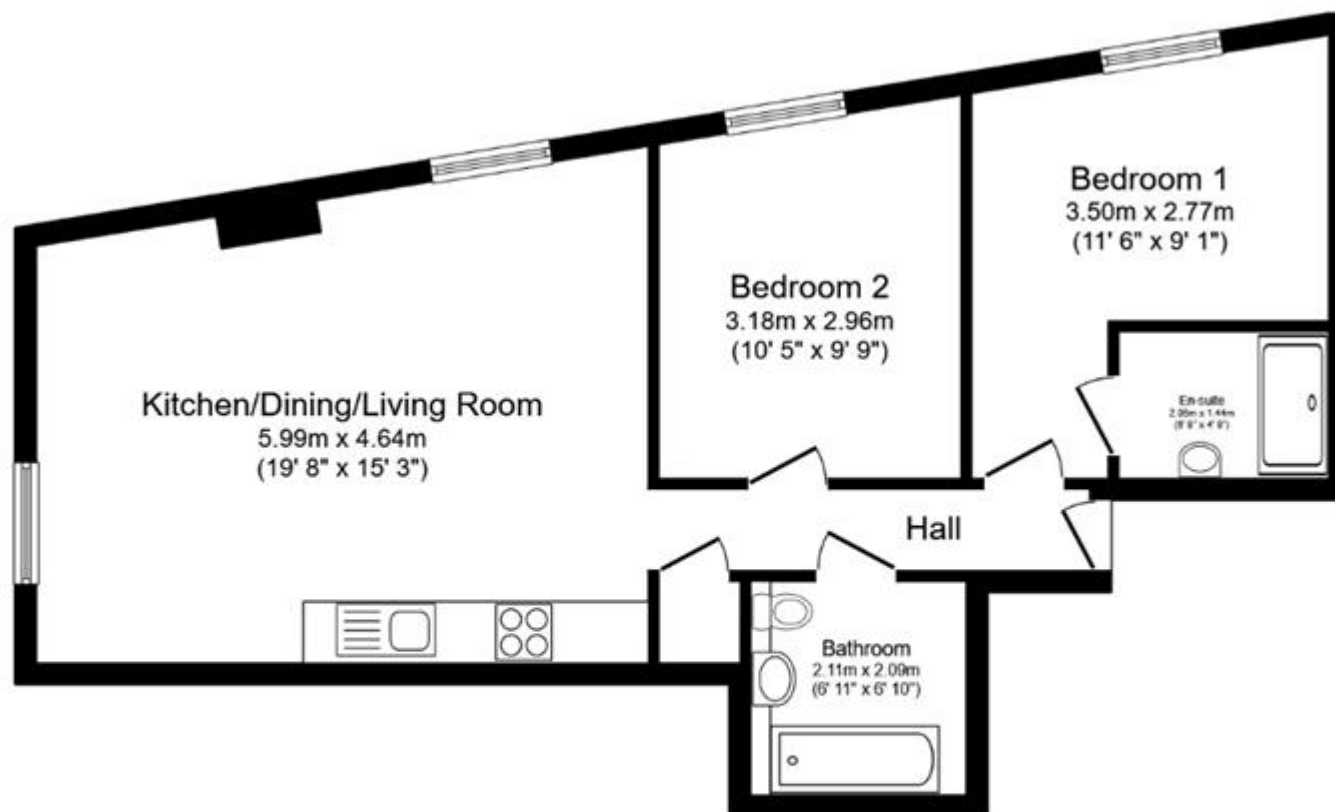
Ground Rent: £346.6 per year

Service Charge: £4,890.78 per year

Tenure

Leasehold



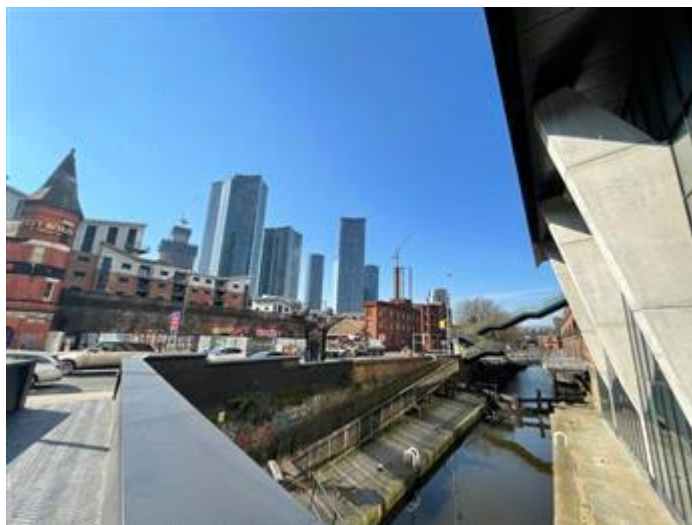
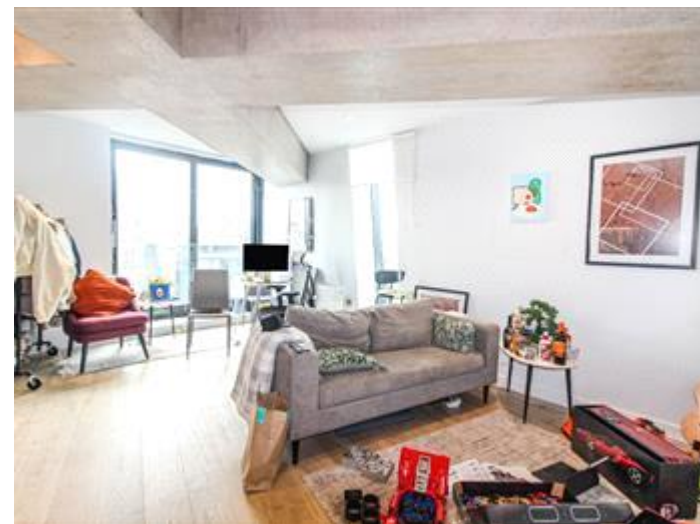
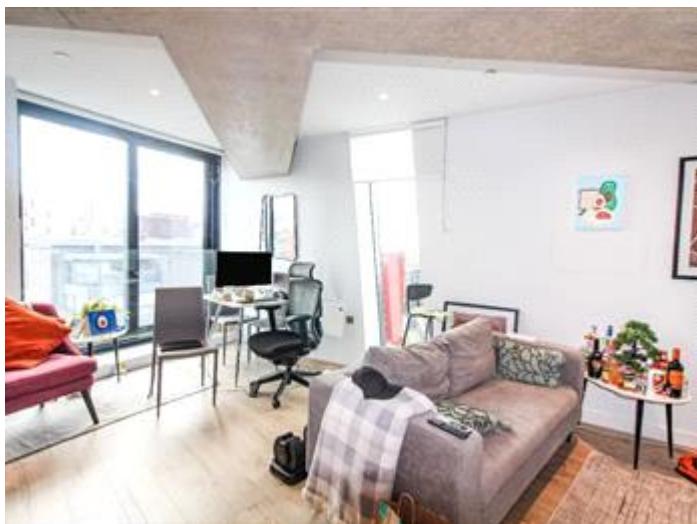


Floor Plan

Floor area 62.0 m² (667 sq.ft.)

TOTAL: 62.0 m² (667 sq.ft.)

This floor plan is for illustrative purposes only. It is not drawn to scale. Any measurements, floor areas (including any total floor area), openings and orientations are approximate. No details are guaranteed, they cannot be relied upon for any purpose and do not form any part of any agreement. No liability is taken for any error, omission or misstatement. A party must rely upon its own inspection(s). Powered by www.Propertybox.io



Energy Efficiency Rating		
	Current	Potential
Very energy efficient - lower running costs		
(92-100) A		
(81-91) B	81	81
(69-80) C		
(55-68) D		
(39-54) E		
(21-38) F		
(1-20) G		

Viewing by appointment only
 NPP Residential - Head Office
 22 Lloyd Street, Manchester M2 5WA
 Tel: 0161 639 0050 Email: info@nppresidential.co.uk Website: <https://nppresidential.co.uk/>