



Junction Works, Ducie Street, Manchester

£220,000 Leasehold

2-bedroom apartment

Description

NPP Residential is pleased to present this stunning 2-bedroom apartment at Junction Works, perfectly positioned in the heart of Manchester city centre, just steps from the Ashton Canal and within walking distance of Manchester Piccadilly station.

This spacious layout features an open-plan living area, a fully fitted kitchen, two generous double bedrooms, and a contemporary bathroom suite.

Situated in the heart of Manchester city centre this apartment is in the perfect location with many shops, bars and restaurants right on your doorstep with excellent transport links via New Islington and Piccadilly tram station just a short walk away.

Originally established in 1829 as William Occleshaw's Lead Mill, Junction Works played a vital role in Britain's Industrial Revolution. Today, its deep historical roots are preserved through the tasteful conversion of the building into characterful apartments, blending heritage with modern living.

Council Tax Band: D (Manchester City Council)

Tenure: Leasehold (123 years)

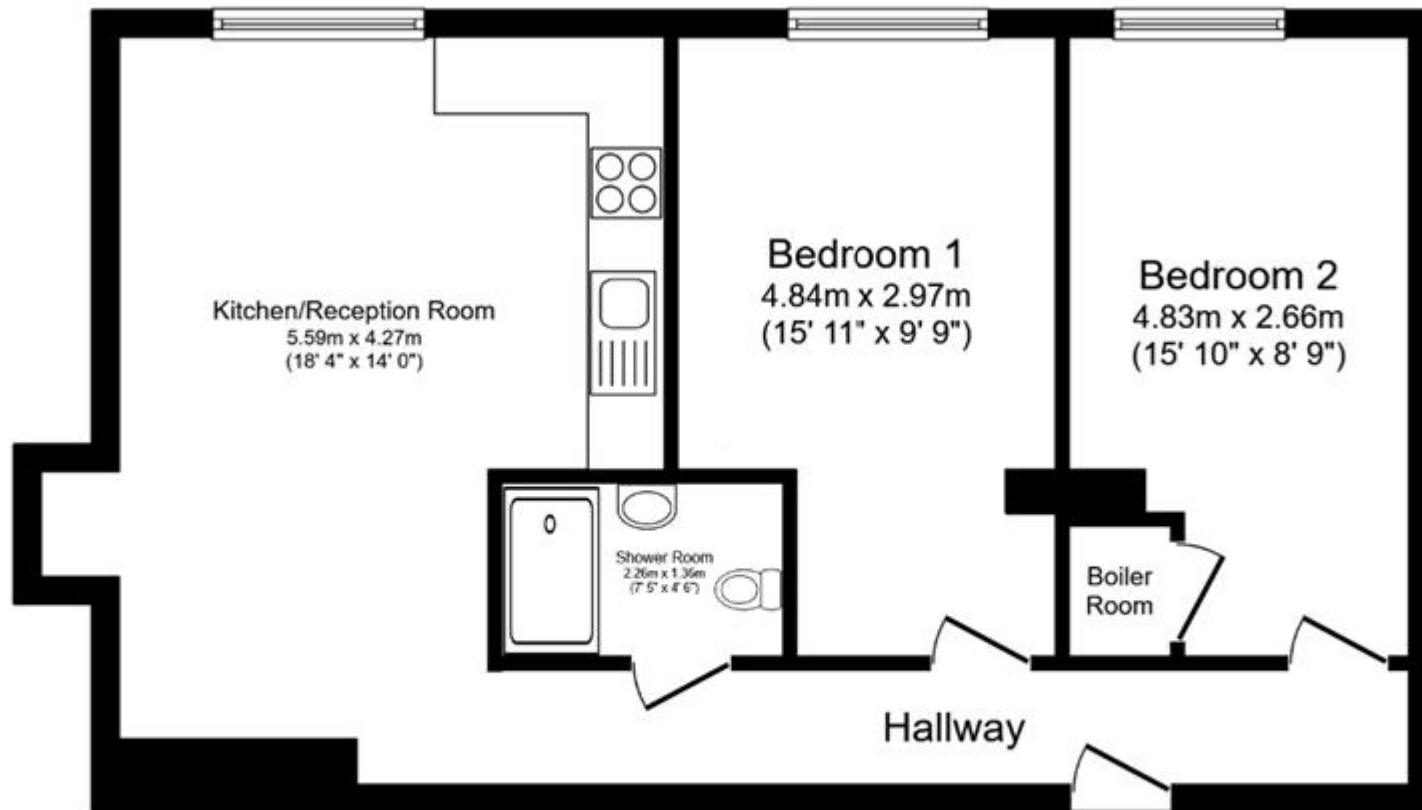
Ground Rent: £150 per year

Service Charge: £3,331.68 per year



Tenure

Leasehold



Floor Plan

Floor area 59.5 sq.m. (640 sq.ft.)

Total floor area: 59.5 sq.m. (640 sq.ft.)

This floor plan is for illustrative purposes only. It is not drawn to scale. Any measurements, floor areas (including any total floor area), openings and orientations are approximate. No details are guaranteed, they cannot be relied upon for any purpose and do not form any part of any agreement. No liability is taken for any error, omission or misstatement. A party must rely upon its own inspection(s). Powered by www.Propertybox.io



Energy Efficiency Rating		
	Current	Potential
Very energy efficient - lower running costs		
(92+) A		
(81-91) B		
(69-80) C		
(55-68) D	67	67
(39-54) E		
(21-38) F		
(1-20) G		

Viewing by appointment only
 NPP Residential - Head Office
 22 Lloyd Street, Manchester M2 5WA
 Tel: 0161 639 0050 Email: info@nppresidential.co.uk Website: <https://nppresidential.co.uk/>