



# Goodwin Building, Potato Wharf

£380,000 Leasehold

2-bedroom, 2-bathroom apartment

## Description

Stunning 2-bedroom Apartment with Balcony and parking!

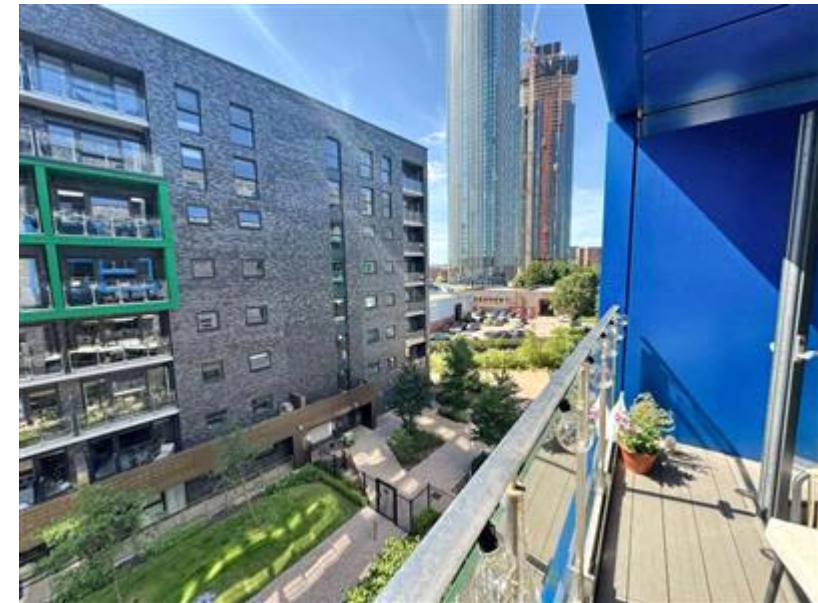
Situated in the highly sought-after Castlefield area, this beautifully furnished second-floor apartment offers modern city living at its best. Featuring two spacious double bedrooms, two stylish bathrooms, and a large open-plan living area, this property is perfect for professionals or sharers.

Enjoy high-spec fittings throughout, along with a private balcony boasting uninterrupted views. Furnished to an exceptional standard, the apartment also provides convenient access to Deansgate's vibrant amenities and is ideally located for easy access to the motorway network.

Tenure: Leasehold (995 years)  
Ground Rent: £240 per year  
Service Charge: £1,972 per year

## Tenure

Leasehold







Viewing by appointment only  
NPP Residential - Head Office  
22 Lloyd Street, Manchester M2 5WA  
Tel: 0161 639 0050 Email: [info@nppresidential.co.uk](mailto:info@nppresidential.co.uk) Website: <https://nppresidential.co.uk/>