



Ringley Road, Whitefield, Manchester

Offers Over £1,500,000 Freehold

5 bedroom detached house for sale

Description

An exceptional gated family residence on one of Greater Manchester's most prestigious roads - Ringley Road - offering luxury, space, and unrivalled privacy.

Set within mature grounds and extending over 4,000 sq ft, this stunning home enjoys breathtaking views over the adjacent golf course and has been finished to the highest internal specification throughout. Combining a timeless traditional design with contemporary touches, the property offers an abundance of versatile living space ideal for modern family life.

The accommodation comprises: a welcoming entrance porch and hallway, cloakroom/WC, formal lounge and dining room, expansive breakfast kitchen with underfloor heating, pantry/utility room, family room, games room, sitting room, and a private gym. The first floor boasts five generous double bedrooms, all with en-suite facilities, including the master suite which features a spacious dressing room, Juliet balcony, and a Swedish sauna.

Externally, the property is approached via electrically operated gates leading to a block-paved driveway with ample off-road parking for multiple vehicles. The rear gardens offer a paved entertaining area, full-sized tennis court, and beautifully landscaped mature borders, providing total privacy and a perfect setting for outdoor leisure and entertaining.



This is a truly remarkable family home, combining size, style, and exclusivity, all set in a prime location with spectacular views and top-class amenities.

Council Tax Band: H (Bury Council)

Tenure: Freehold

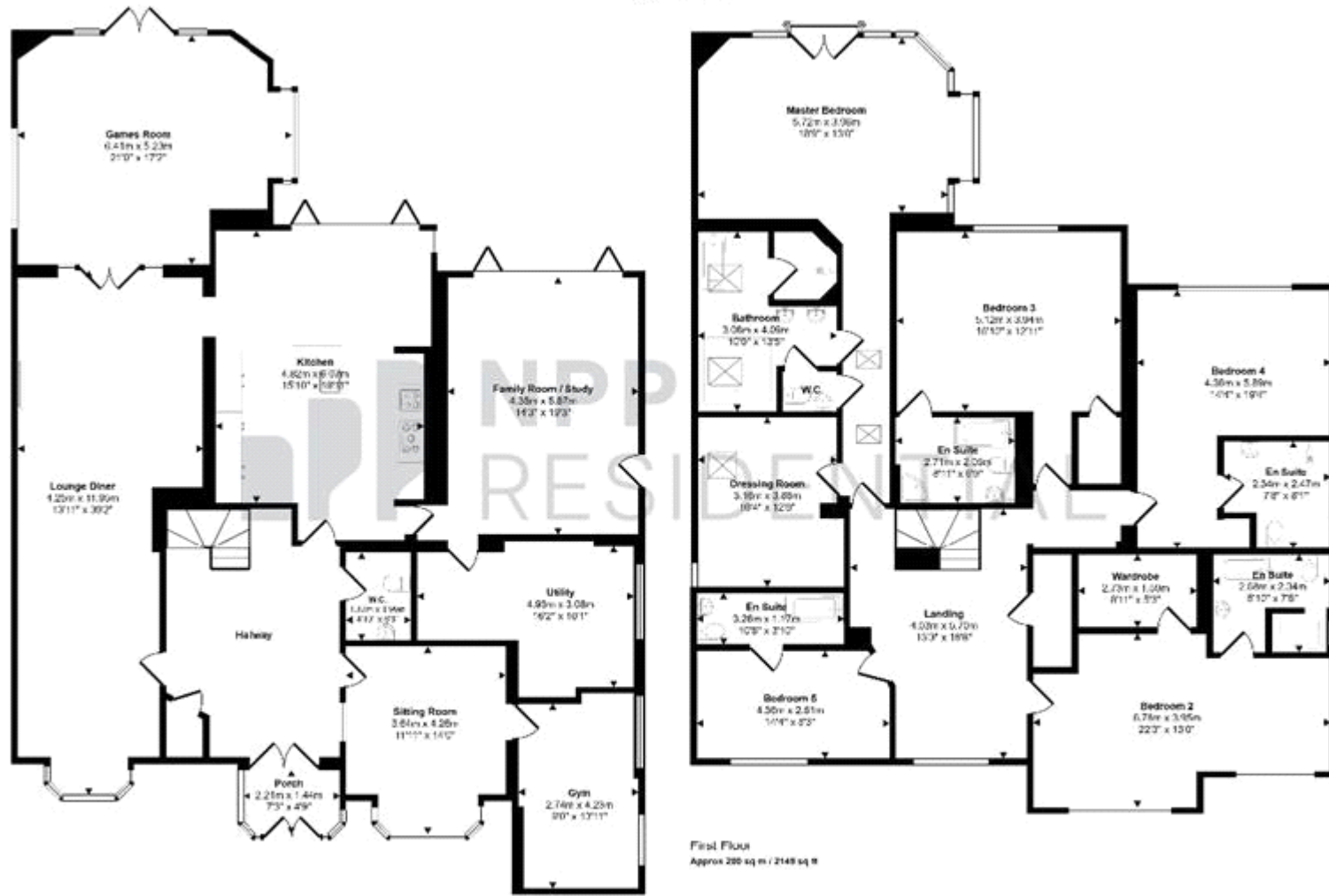
Parking options: Driveway, Off Street

Garden details: Enclosed Garden, Private Garden, Rear Garden

Tenure

Freehold

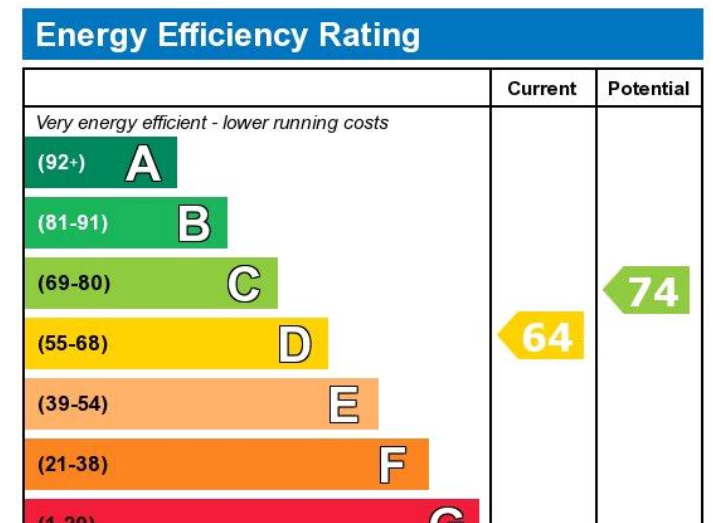
Approx Gross Internal Area
410 sq m / 4418 sq ft



Ground Floor
Approx 211 sq m / 2269 sq ft

First Floor
Approx 200 sq m / 2149 sq ft

The lengths are only for illustrative purposes and do not include measurements of doors, stairs, balconies, and any items are approximate and no responsibility is taken for any error, omission or misstatement. Some of lines such as reference lines are representative only and may not be the actual lines. Made in @ Made Simple 3D.



Viewing by appointment only
 NPP Residential - Head Office
 22 Lloyd Street, Manchester M2 5WA
 Tel: 0161 639 0050 Email: info@nppresidential.co.uk Website: <https://nppresidential.co.uk/>