



Victoria Mill, Lower Vickers Street

£130,000 Leasehold

2 bedroom apartment for sale

Description

Victoria Mill is a well-maintained Grade II listed development, offering modern, comfortable living in a quiet and convenient location on the outskirts of Manchester. The building benefits from easy access to transport links, local shops, and amenities, and this apartment comes with the added convenience of a parking space.

This 2-bedroom apartment is thoughtfully laid out, with an entrance hallway leading into a spacious open-plan living and kitchen area. Both double bedrooms are well-proportioned, with large windows that enhance the rooms. The bathroom is neatly presented and practical. The apartment is equally suited to owner-occupiers or tenants, providing versatile living space that meets a variety of needs.

The property is within easy reach of Ancoats Marina and Manchester Piccadilly Station, making it well connected for commuting into the city. The Northern Quarter, universities, Co-op Arena, and Etihad Stadium are also easily accessible, while the canal-side setting adds a tranquil, waterside element to the location.

For investors, the apartment currently achieves a strong 8.9% RENTAL YIELD, making it an attractive opportunity in a sought-after area. Whether you're looking to grow your portfolio or secure a well-positioned apartment near the city, this property offers both lifestyle and investment potential.



Council Tax Band: A (Manchester City Council)

Tenure: Leasehold (113 years)

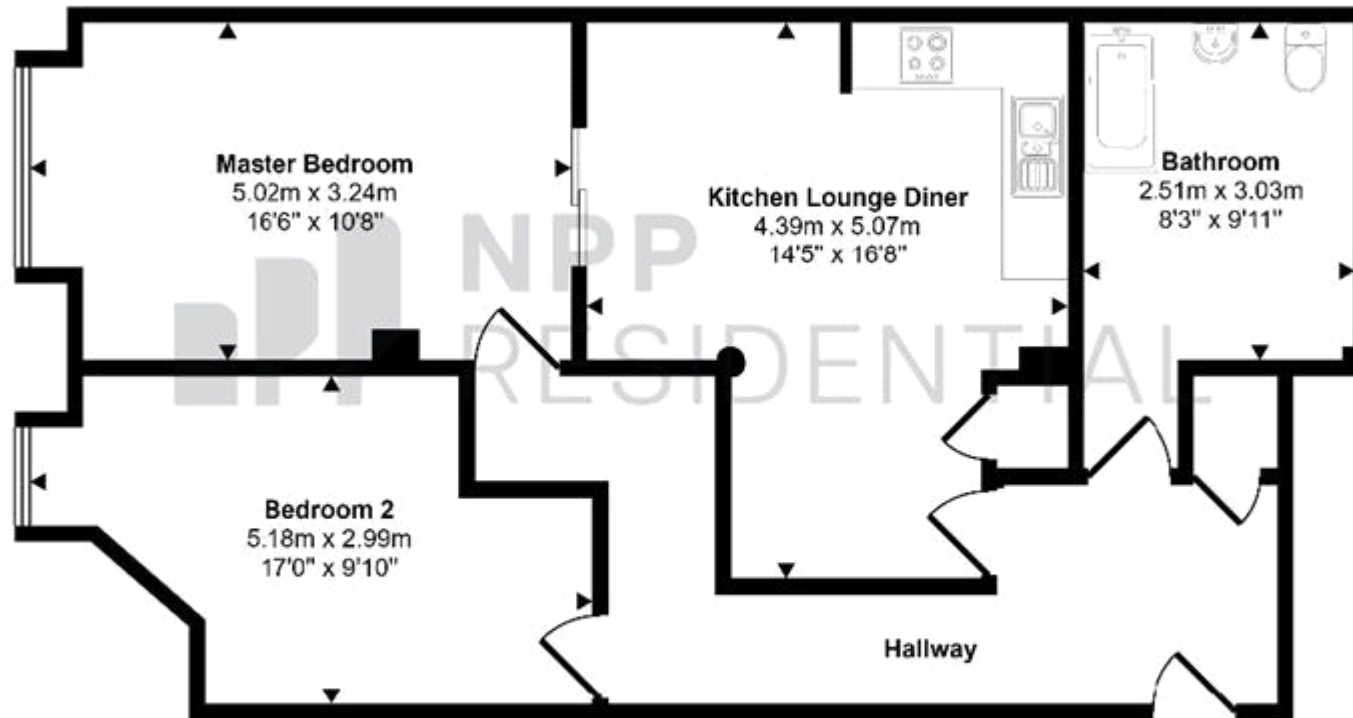
Ground Rent: £375.1 per year

Service Charge: £2,639.62 per year

Tenure

Leasehold

Approx Gross Internal Area
71 sq m / 768 sq ft



Floorplan

This floorplan is only for illustrative purposes and is not to scale. Measurements of rooms, doors, windows, and any items are approximate and no responsibility is taken for any error, omission or mis-statement. Icons of items such as bathroom suites are representations only and may not look like the real items. Made with Made Snappy 360.



Energy Efficiency Rating		
	Current	Potential
Very energy efficient - lower running costs		
(92+) A		
(81-91) B		84
(69-80) C	73	
(55-68) D		
(39-54) E		
(21-38) F		
(1-20) G		

Viewing by appointment only
 NPP Residential - Head Office
 22 Lloyd Street, Manchester M2 5WA
 Tel: 0161 639 0050 Email: info@nppresidential.co.uk Website: <https://nppresidential.co.uk/>